

# 7. West El Fayium 2018 BID ROUND BLOCKS

## Block Summary



### Location :

The block is located in the Eastern part of Western Desert about 60 km from Al Fayium City.

**Total Area: 3736.75 km<sup>2</sup>**

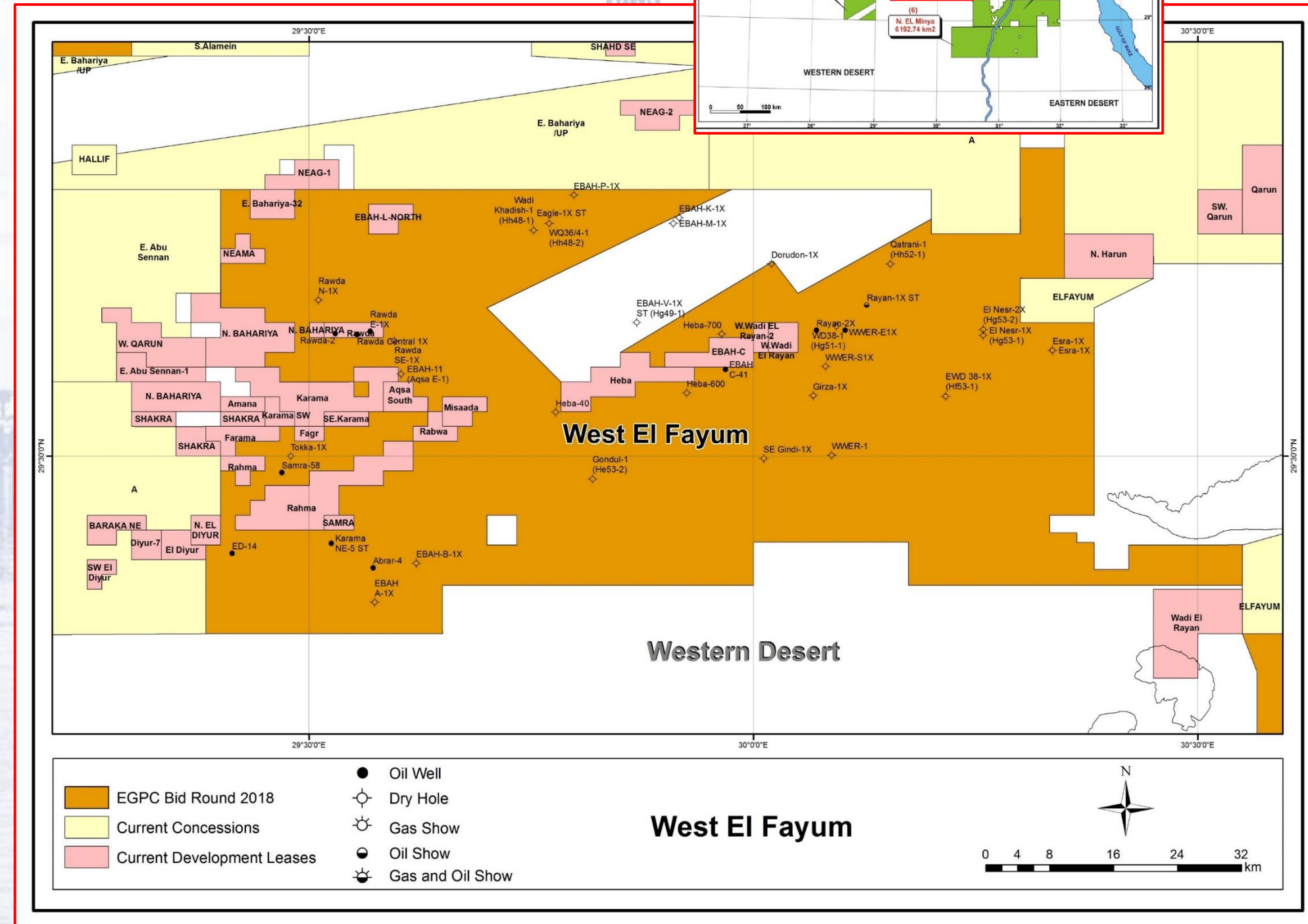
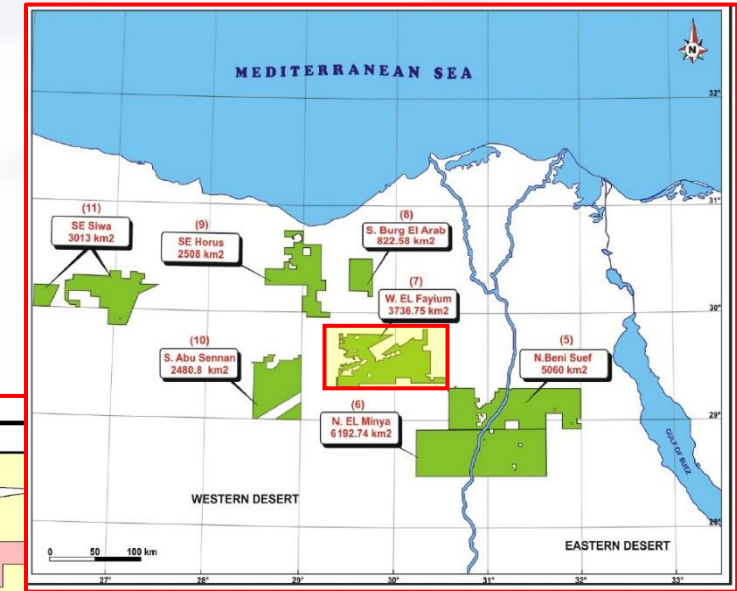
**Previous Concessionaire:** Apache, Norpetco, Edison, Merlon, Repsol, Phonix & Fapco

**2D Seismic Survey: 8754 Km**

**3D Seismic Survey: 3207 Km<sup>2</sup>**

**Drilled Wells: 27 Wells**

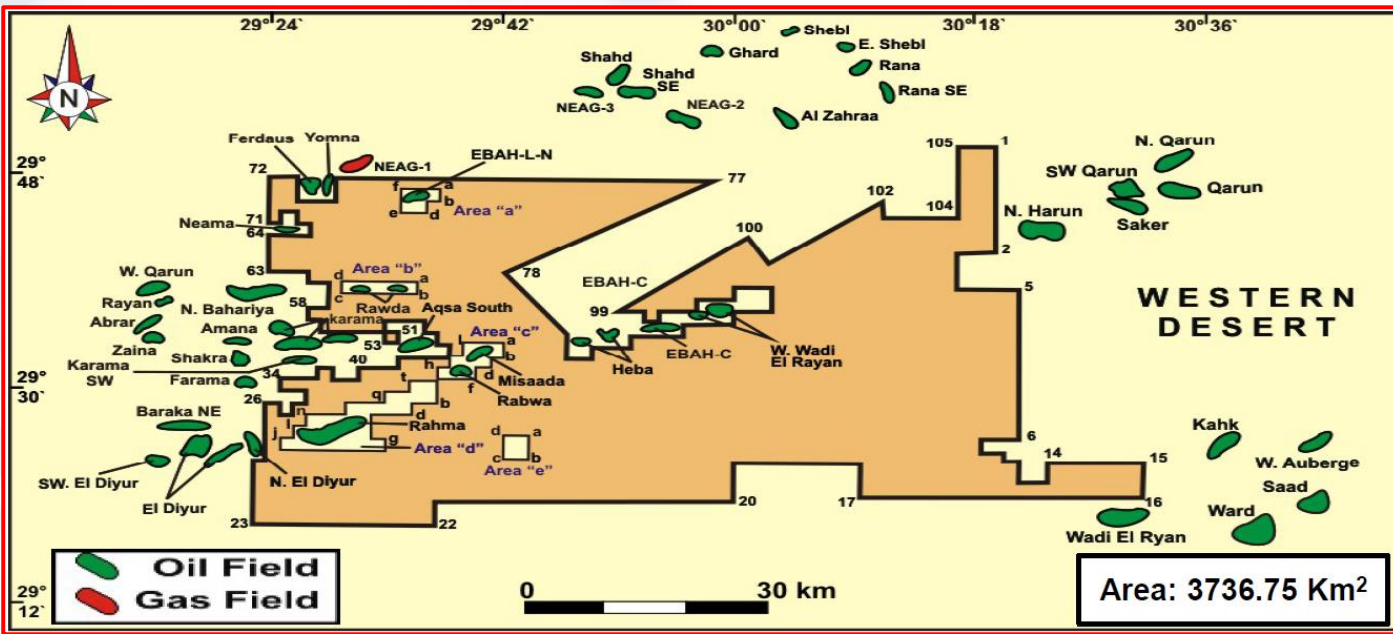
**Range of wells TD:** from 3730 ft. to 13696 ft.



# 7. West El Fayium 2018 BID ROUND BLOCKS

## Block Coordinates

Geographic Coordinate System used: Egypt 1907  
 Angular Unit: Degree  
 Radians per unit: 0.0174532925199433  
 Prime Meridian: Greenwich, Longitude (00° 00' 00.0011)  
 Datum: Egypt 1907  
 Spheroid: Helmert 1906  
 Semi major Axis: 6378200.0  
 Semi minor Axis: 6356818.169627891  
 Inverse Flattening: 298.3



Coordinates					
LAT.	LONG.	LAT.	LONG.	LAT.	LONG.
1- 29° 50' 48.00"	30° 21' 00.00"	43- 29° 33' 00.00"	29° 38' 00.00"	85- 29° 35' 00.00"	29° 56' 00.00"
2- 29° 42' 00.00"	30° 21' 00.00"	44- 29° 34' 00.00"	29° 38' 00.00"	86- 29° 36' 00.00"	29° 56' 00.00"
3- 29° 42' 00.00"	30° 18' 00.00"	45- 29° 34' 00.00"	29° 37' 00.00"	87- 29° 36' 00.00"	30° 00' 00.00"
4- 29° 39' 00.00"	30° 18' 00.00"	46- 29° 35' 00.00"	29° 37' 00.00"	88- 29° 37' 00.00"	30° 00' 00.00"
5- 29° 39' 00.00"	30° 23' 00.00"	47- 29° 35' 00.00"	29° 36' 00.00"	89- 29° 37' 00.00"	30° 03' 00.00"
6- 29° 26' 00.00"	30° 23' 00.00"	48- 29° 36' 00.00"	29° 36' 00.00"	90- 29° 39' 00.00"	30° 03' 00.00"
7- 29° 26' 00.00"	30° 20' 00.00"	49- 29° 36' 00.00"	29° 33' 00.00"	91- 29° 39' 00.00"	30° 00' 00.00"
8- 29° 24' 50.00"	30° 20' 00.00"	50- 29° 35' 00.00"	29° 33' 00.00"	92- 29° 38' 00.00"	30° 00' 00.00"
9- 29° 24' 50.00"	30° 21' 50.00"	51- 29° 35' 00.00"	29° 34' 00.00"	93- 29° 38' 00.00"	29° 57' 00.00"
10- 29° 24' 10.00"	30° 21' 50.00"	52- 29° 34' 00.00"	29° 34' 00.00"	94- 29° 37' 00.00"	29° 57' 00.00"
11- 29° 24' 10.00"	30° 23' 00.00"	53- 29° 34' 00.00"	29° 33' 00.00"	95- 29° 37' 00.00"	29° 54' 00.00"
12- 29° 22' 20.00"	30° 23' 00.00"	54- 29° 35' 00.00"	29° 33' 00.00"	96- 29° 36' 00.00"	29° 54' 00.00"
13- 29° 22' 20.00"	30° 25' 20.00"	55- 29° 35' 00.00"	29° 28' 00.00"	97- 29° 36' 00.00"	29° 53' 00.00"
14- 29° 24' 00.00"	30° 25' 20.00"	56- 29° 36' 00.00"	29° 28' 00.00"	98- 29° 37' 00.00"	29° 53' 00.00"
15- 29° 24' 00.00"	30° 33' 00.00"	57- 29° 36' 00.00"	29° 27' 00.00"	99- 29° 37' 00.00"	29° 51' 00.00"
16- 29° 21' 16.00"	30° 33' 00.00"	58- 29° 37' 00.00"	29° 27' 00.00"	100- 29° 43' 10.00"	30° 01' 20.00"
17- 29° 21' 16.00"	30° 10' 28.00"	59- 29° 37' 00.00"	29° 29' 00.00"	101- 29° 41' 00.00"	30° 03' 00.00"
18- 29° 24' 11.00"	30° 10' 28.00"	60- 29° 39' 00.00"	29° 29' 00.00"	102- 29° 46' 20.00"	30° 12' 00.00"
19- 29° 24' 11.00"	30° 00' 00.00"	61- 29° 39' 00.00"	29° 27' 00.00"	103- 29° 45' 00.00"	30° 12' 00.00"
20- 29° 21' 16.00"	30° 00' 00.00"	62- 29° 40' 00.00"	29° 27' 00.00"	104- 29° 45' 00.00"	30° 18' 00.00"
21- 29° 21' 16.00"	29° 39' 00.00"	63- 29° 40' 00.00"	29° 24' 00.00"	105- 29° 50' 48.00"	30° 18' 00.00"
22- 29° 18' 00.00"	29° 39' 00.00"	64- 29° 43' 00.00"	29° 24' 00.00"		
23- 29° 18' 00.00"	29° 23' 00.00"	65- 29° 43' 00.00"	29° 27' 00.00"		
24- 29° 24' 00.00"	29° 23' 00.00"	66- 29° 44' 00.00"	29° 27' 00.00"		
25- 29° 24' 00.00"	29° 24' 00.00"	67- 29° 44' 00.00"	29° 26' 00.00"		
26- 29° 29' 00.00"	29° 24' 00.00"	68- 29° 45' 00.00"	29° 26' 00.00"		
27- 29° 29' 00.00"	29° 25' 00.00"	69- 29° 45' 00.00"	29° 25' 00.00"		
28- 29° 28' 00.00"	29° 25' 00.00"	70- 29° 44' 00.00"	29° 25' 00.00"		
29- 29° 28' 00.00"	29° 26' 00.00"	71- 29° 44' 00.00"	29° 24' 00.00"		
30- 29° 29' 00.00"	29° 26' 00.00"	72- 29° 48' 00.00"	29° 24' 00.00"		
31- 29° 29' 00.00"	29° 27' 00.00"	73- 29° 48' 00.00"	29° 26' 00.00"		
32- 29° 30' 00.00"	29° 27' 00.00"	74- 29° 46' 00.00"	29° 26' 00.00"		
33- 29° 30' 00.00"	29° 25' 00.00"	75- 29° 46' 00.00"	29° 29' 00.00"		
34- 29° 31' 00.00"	29° 25' 00.00"	76- 29° 48' 00.00"	29° 29' 00.00"		
35- 29° 31' 00.00"	29° 28' 00.00"	77- 29° 48' 00.00"	29° 58' 30.00"		
36- 29° 32' 00.00"	29° 28' 00.00"	78- 29° 40' 00.00"	29° 42' 00.00"		
37- 29° 32' 00.00"	29° 29' 00.00"	79- 29° 35' 00.00"	29° 47' 00.00"		
38- 29° 31' 00.00"	29° 29' 00.00"	80- 29° 33' 00.00"	29° 47' 00.00"		
39- 29° 31' 00.00"	29° 31' 00.00"	81- 29° 33' 00.00"	29° 49' 00.00"		
40- 29° 32' 00.00"	29° 31' 00.00"	82- 29° 34' 00.00"	29° 49' 00.00"		
41- 29° 32' 00.00"	29° 34' 00.00"	83- 29° 34' 00.00"	29° 52' 00.00"		
42- 29° 33' 00.00"	29° 34' 00.00"	84- 29° 35' 00.00"	29° 52' 00.00"		

Excluded Areas	
Area "a"	
LAT.	LONG.
a- 29° 47' 00.00"	29° 37' 00.00"
b- 29° 46' 00.00"	29° 37' 00.00"
c- 29° 46' 00.00"	29° 36' 00.00"
d- 29° 45' 00.00"	29° 36' 00.00"
e- 29° 45' 00.00"	29° 34' 00.00"
f- 29° 47' 00.00"	29° 34' 00.00"

Area "b"	
LAT.	LONG.
a- 29° 39' 00.00"	29° 35' 00.00"
b- 29° 38' 00.00"	29° 35' 00.00"
c- 29° 38' 00.00"	29° 30' 00.00"
d- 29° 39' 00.00"	29° 30' 00.00"

Area "c"	
LAT.	LONG.
a- 29° 34' 00.00"	29° 42' 00.00"
b- 29° 33' 00.00"	29° 42' 00.00"
c- 29° 33' 00.00"	29° 41' 00.00"
d- 29° 32' 00.00"	29° 41' 00.00"
e- 29° 32' 00.00"	29° 40' 00.00"
f- 29° 31' 00.00"	29° 40' 00.00"
g- 29° 31' 00.00"	29° 37' 00.00"
h- 29° 32' 00.00"	29° 37' 00.00"
i- 29° 32' 00.00"	29° 38' 00.00"
j- 29° 33' 00.00"	29° 38' 00.00"
k- 29° 33' 00.00"	29° 39' 00.00"
l- 29° 34' 00.00"	29° 39' 00.00"

Area "d"	
LAT.	LONG.
a- 29° 31' 00.00"	29° 37' 00.00"
b- 29° 29' 00.00"	29° 37' 00.00"
c- 29° 29' 00.00"	29° 35' 00.00"
d- 29° 28' 00.00"	29° 35' 00.00"
e- 29° 28' 00.00"	29° 32' 00.00"
f- 29° 26' 00.00"	29° 32' 00.00"
g- 29° 26' 00.00"	29° 33' 00.00"
h- 29° 25' 00.00"	29° 33' 00.00"
i- 29° 25' 00.00"	29° 25' 00.00"
j- 29° 26' 00.00"	29° 25' 00.00"
k- 29° 26' 00.00"	29° 26' 00.00"
l- 29° 27' 00.00"	29° 26' 00.00"
m- 29° 27' 00.00"	29° 27' 00.00"
n- 29° 28' 00.00"	29° 27' 00.00"
o- 29° 28' 00.00"	29° 30' 00.00"
p- 29° 29' 00.00"	29° 30' 00.00"
q- 29° 29' 00.00"	29° 33' 00.00"
r- 29° 30' 00.00"	29° 33' 00.00"
s- 29° 30' 00.00"	29° 35' 00.00"
t- 29° 31' 00.00"	29° 35' 00.00"

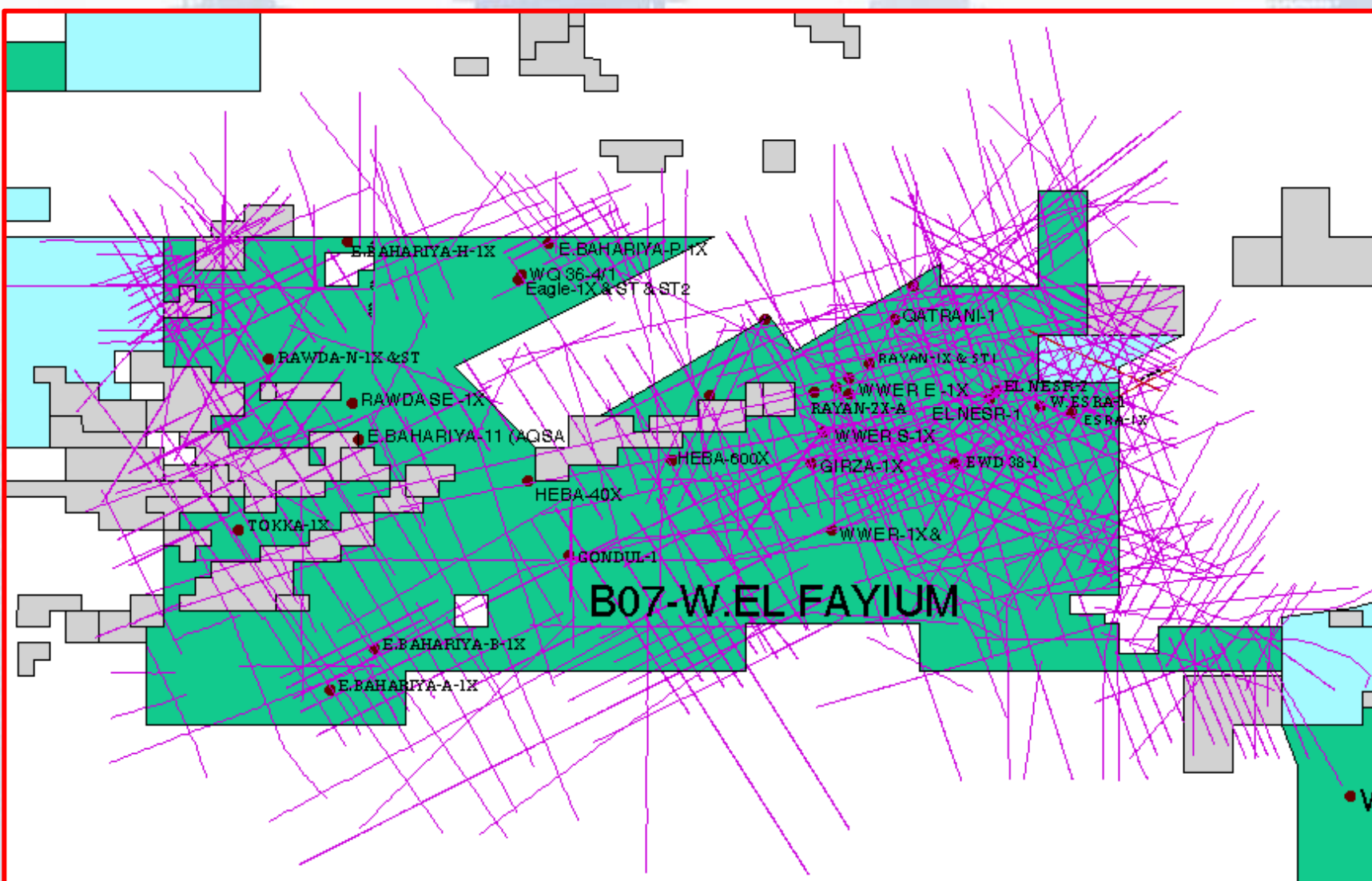
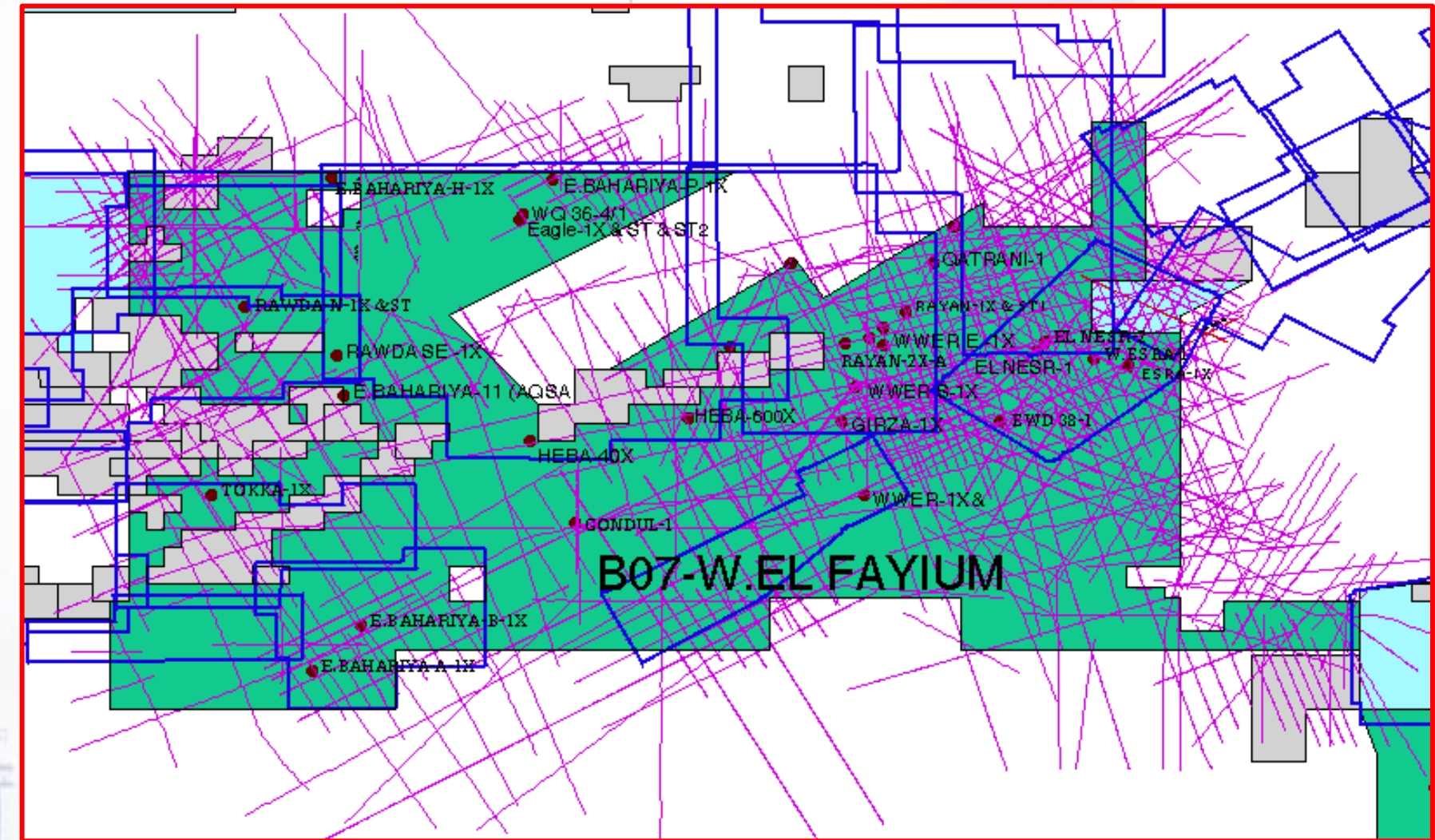
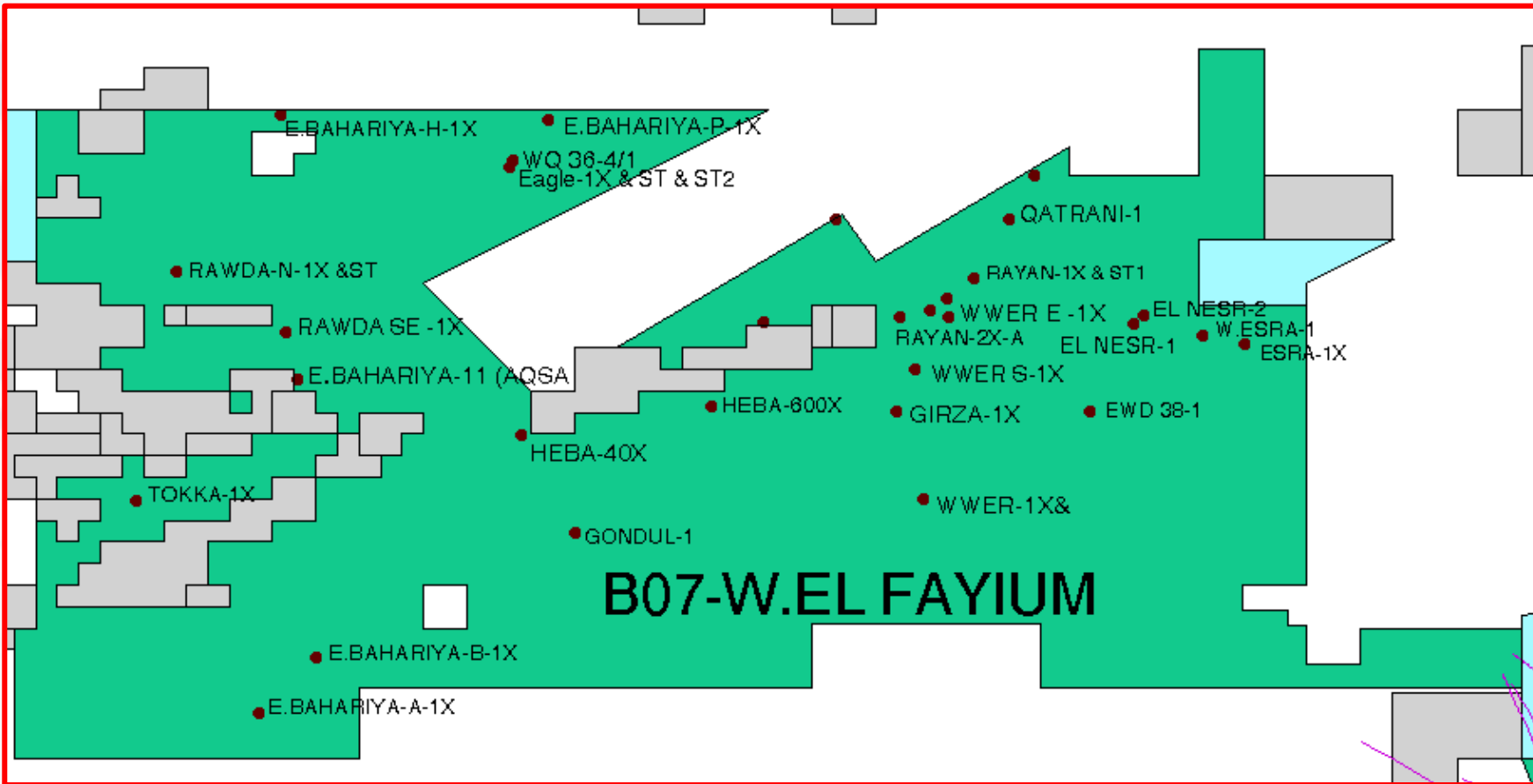
Area "e"	
LAT.	LONG.
a- 29° 26' 00.00"	29° 44' 00.00"
b- 29° 24' 00.00"	29° 44' 00.00"
c- 29° 24' 00.00"	29° 42' 00.00"
d- 29° 26' 00.00"	29° 42' 00.00"

**WEST EL FAYIUM WELLS**

<b>NO.</b>	<b>10WELL NAME / NEW NAME</b>	<b>COMPANY</b>	<b>SPUD. DATE COMP. DATE</b>	<b>LAT. LONG.</b>	<b>T. D. FEET</b>	<b>FORMATION REACHED</b>	<b>FINAL STATUS</b>
1	EBAH H-1X	APACHE	07/10/2015 25/10/2015	29° 47' 45.9" 29° 35' 28.4"	09,210	KHARITA	P & A
2	TOKKA -1X	APACHE	25/01/2013 10/02/2013	29° 29' 59.5" 29° 28' 45.1"	08,125	L. BAHARIYA	P & A
3	HEBA -40	APACHE	19/10/2012 31/10/2012	29° 32' 57.4" 29° 46' 39.1"	07,980	L. BAHARIYA	P & A
4	HEBA -600X	APACHE	03/10/2012 13/10/2012	29° 34' 15.9" 29° 55' 29.4"	07,360	L. BAHARIYA	P & A
5	HEBA -700X	APACHE	11/09/2012 27/09/2012	29° 38' 14.1" 29° 57' 51.8"	06,935	L. BAHARIYA	P & A
6	RAWDA SE -1X	NORPETCO	03/05/2012 28/05/2012	29° 37' 46.5" 29° 35' 45.1"	10,490	BAHARIYA	P & A
7	WWER -S 1X (Hg 51-1)	EDISON	30/04/2012 24/05/2012	29° 36' 02.9" 30° 04' 52.6"	06,400	L. BAHARIYA	P & A (oil & gas shows in Late Cretaceous)
8	RAYAN -2X	EDISON	02/04/2012 27/04/2012	29° 38' 30.1" 30° 04' 15.5"	04,600	L. BAHARIYA	T & A (Oil dis. in U.Bahariya)
9	WWER -E 1X	EDISON	13/01/2012 05/03/2012	29° 38' 25.5" 30° 06' 25.9"	09,374	L. JURASSIC (SHUSHA)	T & A (Oil dis. in U.Bahariya)
10	RAYAN -1X ST	EDISON	13/10/2011 06/11/2011	29° 40' 12.8" 30° 07' 40.0"	03,730	L. BAHARIYA	P & A (Non commercial)
11	EAGLE-1X ST (Hg 48-3)	APACHE	10/05/2011 18/08/2011	29° 45' 22.9" 29° 46' 03.2"	12,360	A. Roash/G	T & A (drilling problems & oil shows))
12	DORUDON -1X	EDISON	21/05/2010 22/06/2010	29° 42' 58.7" 30° 01' 12.9"	06,300	L. BAHARIYA	P & A
13	RAWDA N -1X	NORPETCO	19/05/2010 -----	29° 40' 31.9" 29° 30' 37.9"	10,600	U. BAHARIYA	P & A
14	EBAH - P -1X (Hh 48-2)	APACHE	27/06/2009 03/08/2009	29° 47' 37.1" 29° 47' 52.5"	11,118	KHARITA	P & A

**WEST EL FAYIUM WELLS**

<b>NO.</b>	<b>WELL NAME / NEW NAME</b>	<b>COMPANY</b>	<b>SPUD. DATE COMP. DATE</b>	<b>LAT. LONG.</b>	<b>T. D. FEET</b>	<b>FORMATION REACHED</b>	<b>FINAL STATUS</b>
15	<b>EBAH B-1X (Hd 47-1)</b>	<b>APACHE</b>	<b>05/08/2008 20/08/2008</b>	<b>29° 22' 40.5" 29° 37' 06.2"</b>	<b>04,930</b>	<b>BAHARIYA</b>	<b>P &amp; A</b>
16	<b>ESRA -1X</b>	<b>MERLON</b>	<b>21/07/2008 30/08/2008</b>	<b>29° 37' 08.6" 30° 20' 12.1"</b>	<b>09,110</b>	<b>L. BAHARIYA</b>	<b>P &amp; A</b>
17	<b>EBAH A-1X (Hd 46-1)</b>	<b>APACHE</b>	<b>10/07/2008 31/07/2008</b>	<b>29° 20' 07.8" 29° 34' 25.9"</b>	<b>04,880</b>	<b>BAHARIYA</b>	<b>P &amp; A</b>
18	<b>WWER -1</b>	<b>EDISON</b>	<b>01/07/2006 29/07/2006</b>	<b>29° 30' 03.0" 30° 05' 17.0"</b>	<b>07,500</b>	<b>KHARITA</b>	<b>P &amp; A</b>
19	<b>EBAH-11 (AQSA E-1) (Hf 47-3)</b>	<b>APACHE</b>	<b>23/08/2003 17/09/2003</b>	<b>29° 35' 32.8" 29° 36' 12.1"</b>	<b>09,600</b>	<b>BAHARIYA</b>	<b>P &amp; A</b>
20	<b>W. ESRA</b>	<b>MERLON</b>	<b>23/05/2006 17/07/2006</b>	<b>29° 37' 35.0" 30° 18' 15.3"</b>	<b>10,436</b>	<b>KHARITA</b>	<b>P &amp; A</b>
21	<b>EWD 38-1X (Hf 53-1)</b>	<b>APACHE</b>	<b>09/05/2000 20/06/2000</b>	<b>29° 34' 02.3" 30° 12' 59.4"</b>	<b>10,343</b>	<b>BASEMENT</b>	<b>P &amp; A</b>
22	<b>GONDUL -1 (He 49-1)</b>	<b>REPSOL</b>	<b>06/05/2000 25/05/2000</b>	<b>29° 28' 26.7" 29° 49' 07.9"</b>	<b>06,400</b>	<b>KHARITA</b>	<b>P &amp; A</b>
23	<b>EL NESR -2X (Hg 53-2)</b>	<b>APACHE</b>	<b>12/04/1997 15/05/1997</b>	<b>29° 38' 32.9" 30° 15' 31.4"</b>	<b>07,660</b>	<b>PRE KHARITA</b>	<b>P &amp; A</b>
24	<b>QATRANI -1 (Hh 52-1)</b>	<b>REPSOL</b>	<b>13/11/1996 11/12/1996</b>	<b>29° 42' 57.9" 30° 09' 15.4"</b>	<b>07,500</b>	<b>L. JURASSIC</b>	<b>P &amp; A</b>
25	<b>EL NESR -1X (Hg 53-1)</b>	<b>PHONIX</b>	<b>19/05/1995 11/07/1995</b>	<b>29° 38' 08.8" 30° 15' 04.0"</b>	<b>09,740</b>	<b>BASEMENT</b>	<b>P &amp; A</b>
26	<b>WQ 36/4-1 (Hh 48-2)</b>	<b>AMOCO</b>	<b>01/01/1991 15/04/1991</b>	<b>29° 45' 42.6" 29° 46' 12.5"</b>	<b>13,696</b>	<b>KHARITA</b>	<b>P &amp; A</b>
27	<b>WD 38-1 (Hg 51-1)</b>	<b>FAPCO</b>	<b>16/05/1974 06/07/1974</b>	<b>29° 38' 45.0" 30° 05' 36.5"</b>	<b>09,715</b>	<b>JURASSIC</b>	<b>P &amp; A</b>



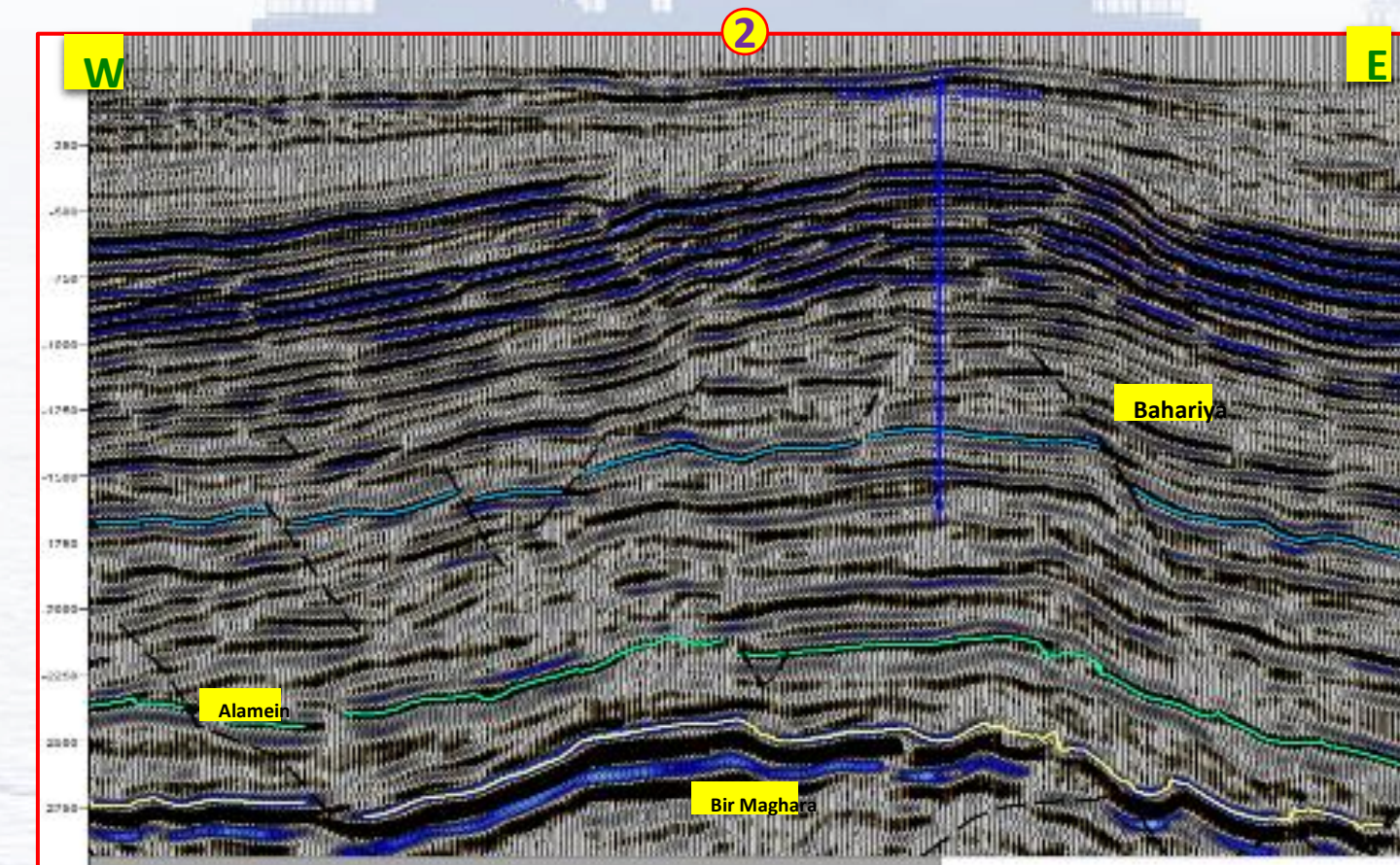
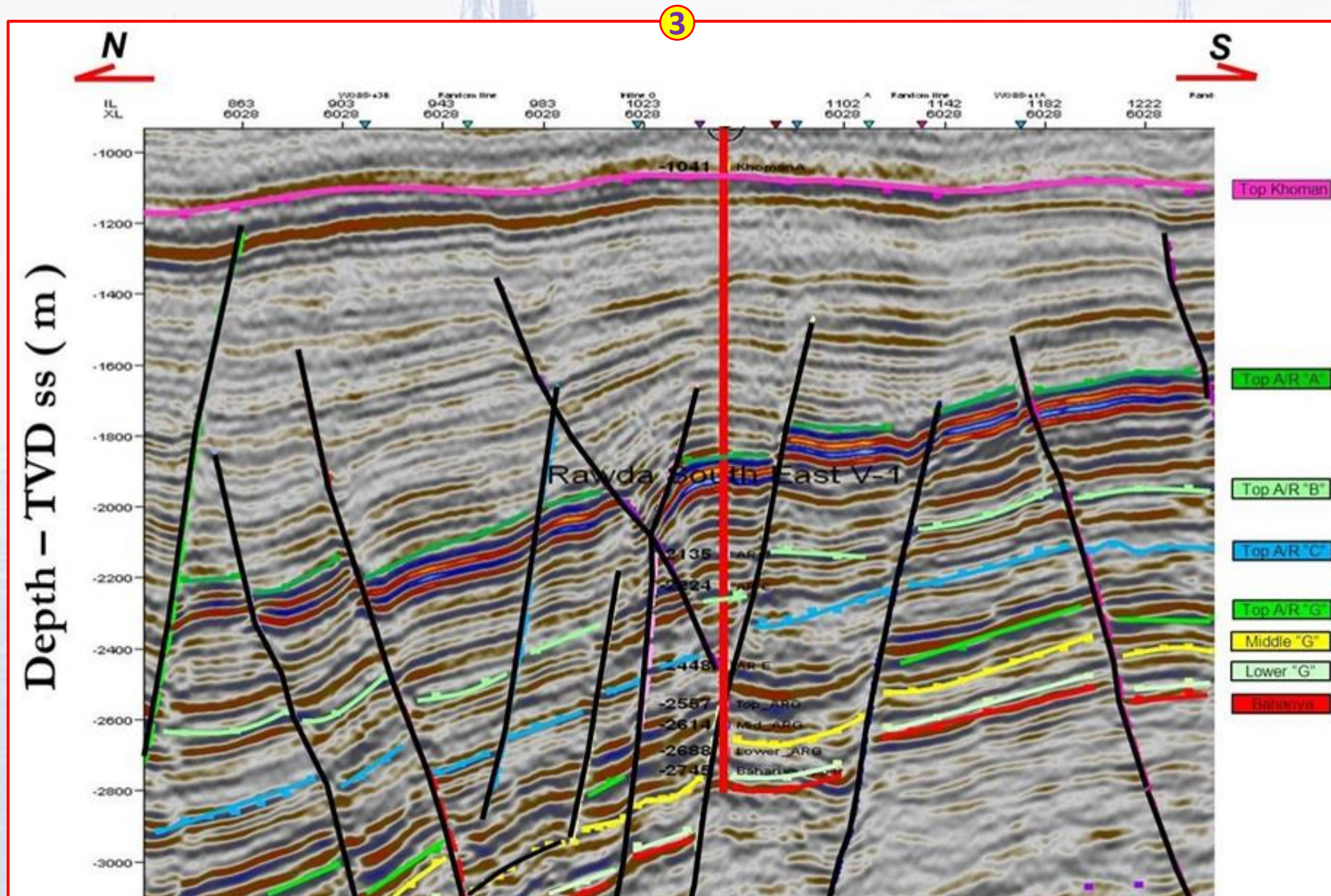
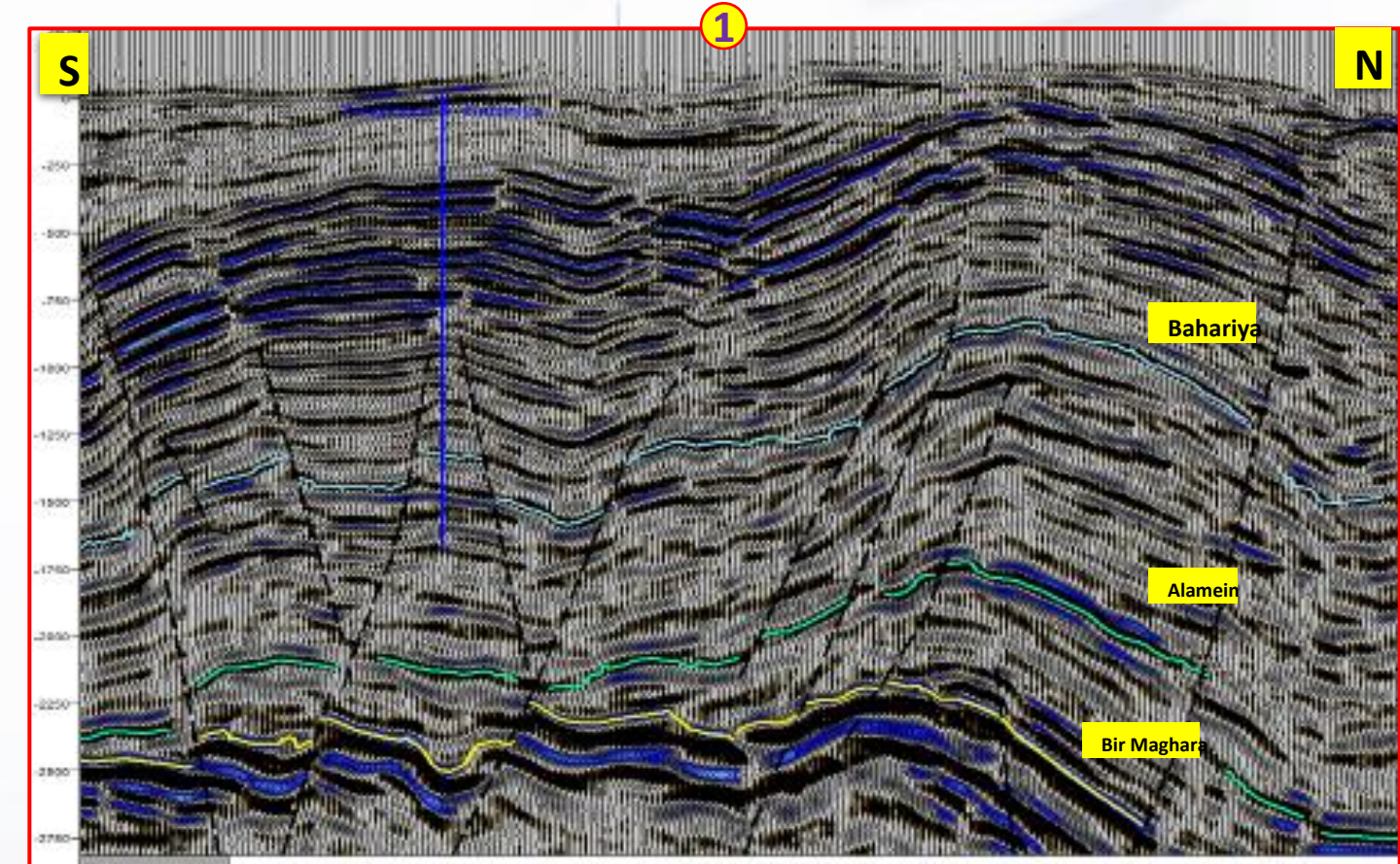
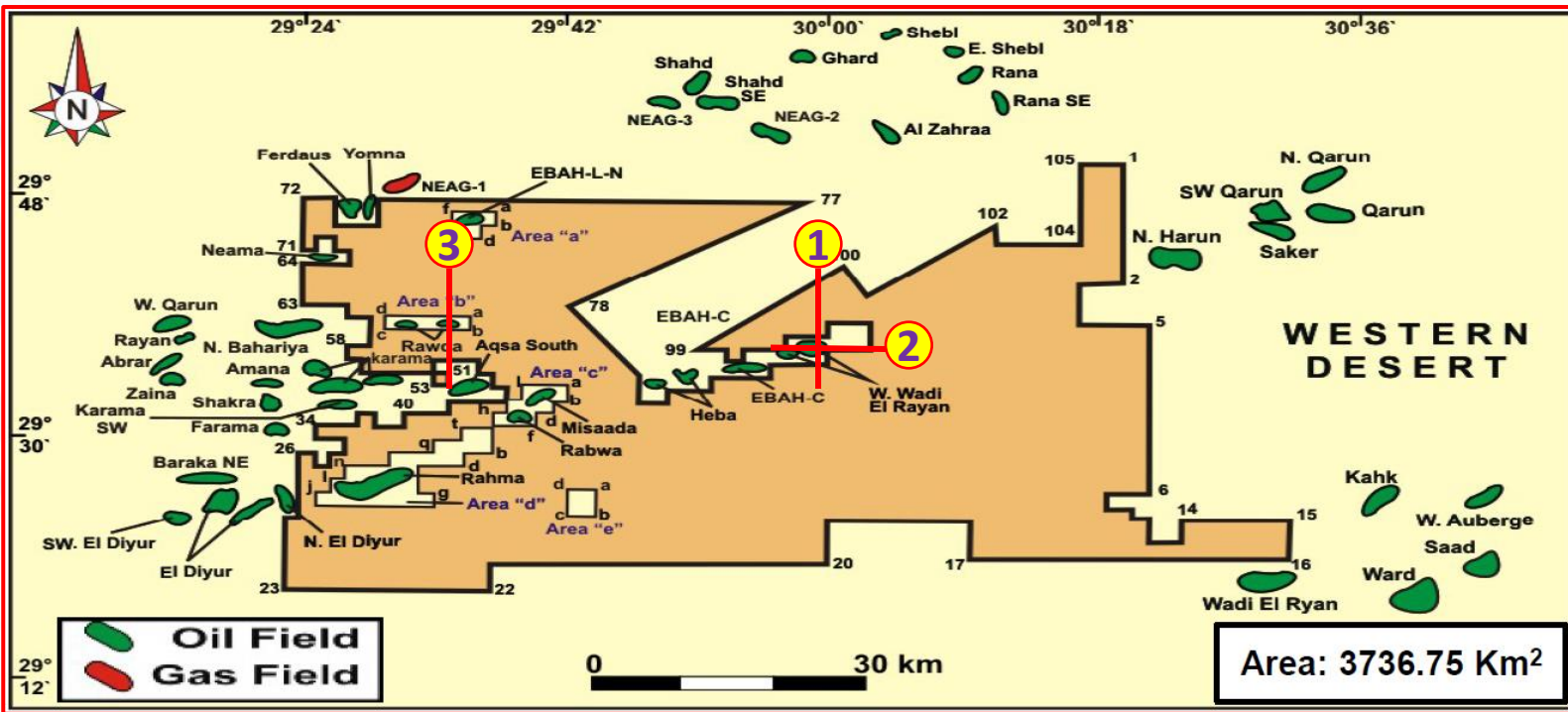
**2D Seismic Survey: 8754 Km**

**3D Seismic Survey: 3207 Km<sup>2</sup>**

- ✓ Apache East Bahariya North 2003: 252 Km<sup>2</sup>
- ✓ Sipetrol North Bahariya 2004: 249 Km<sup>2</sup>
- ✓ Edison West Wadi Elrayan 2006: 214 Km<sup>2</sup>
- ✓ Apache East Bahariya 2006: 1045 Km<sup>2</sup>
- ✓ Merlon Esraa 2007: 263 Km<sup>2</sup>
- ✓ Apache East Bahariya South 2007: 440 Km<sup>2</sup>
- ✓ Apache Diyr East 2006: 125 Km<sup>2</sup>
- ✓ West Wadi El Rayan 2007: 356 Km<sup>2</sup>
- ✓ Sipetrol East Ras Qattara South 2008: 263 Km<sup>2</sup>

# 7. West El Fayium 2018 BID ROUND BLOCKS

## Seismic Model



## Petroleum System



### Petroleum System Elements & Hydrocarbon Plays

- **Basin:** The block is close to the Eastern flank of Abu Gharadig Basin.
- **Sources:**

The rock analysis in nearby areas shows that the source rock here are Khatatba Shale (Jurassic), and possible A/R "F" Cretaceous.

#### ➤ Reservoirs:

Main reservoir in block U. Cretaceous age (A/R "G" Member & Bahariya).

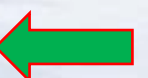
#### ➤ Seal:

Main top seal for A/R "G" & Bahariya reservoirs is the A/R "G" shales and AR "F" carbonates in addition to regional top seal Dabaa shale.

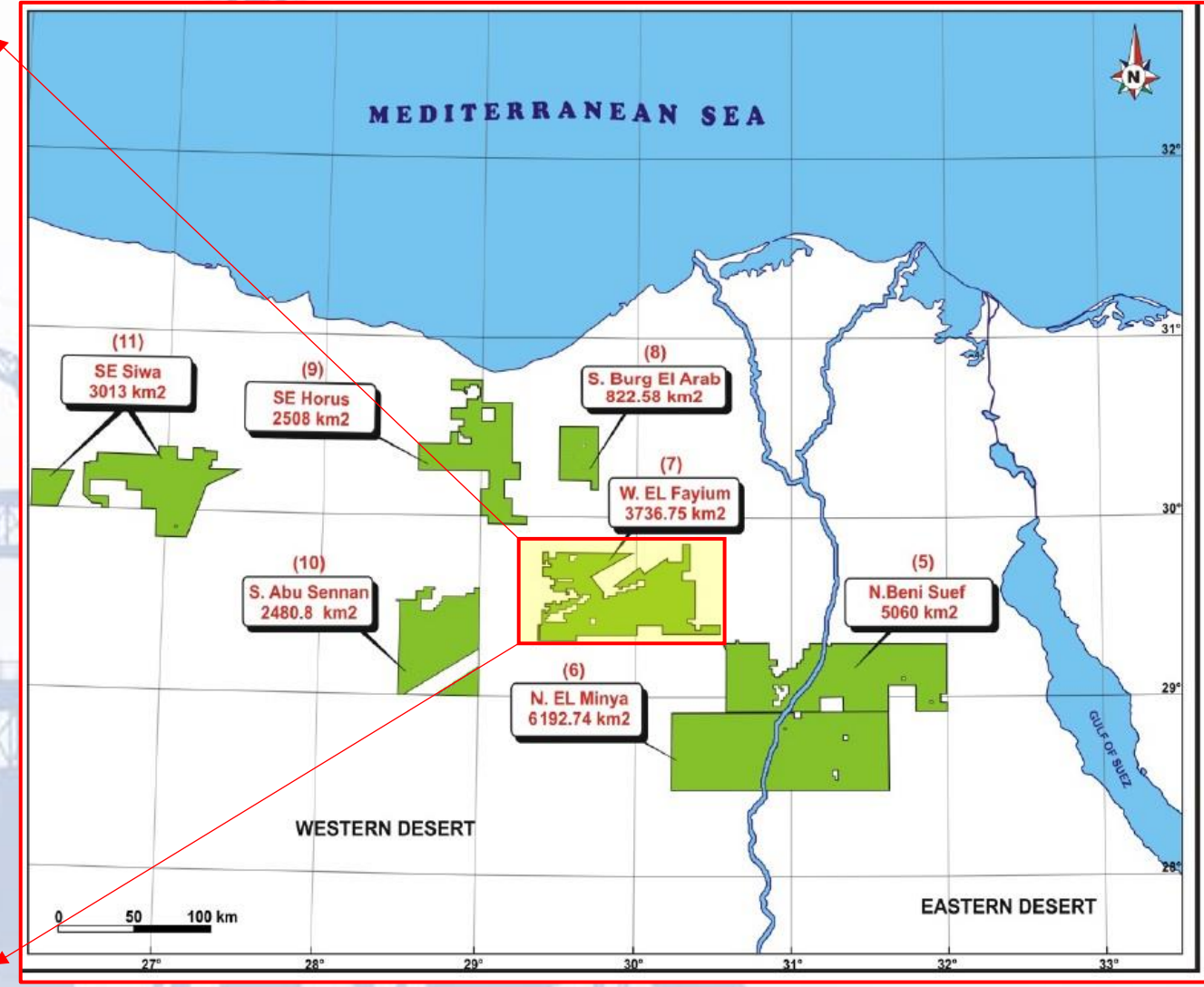
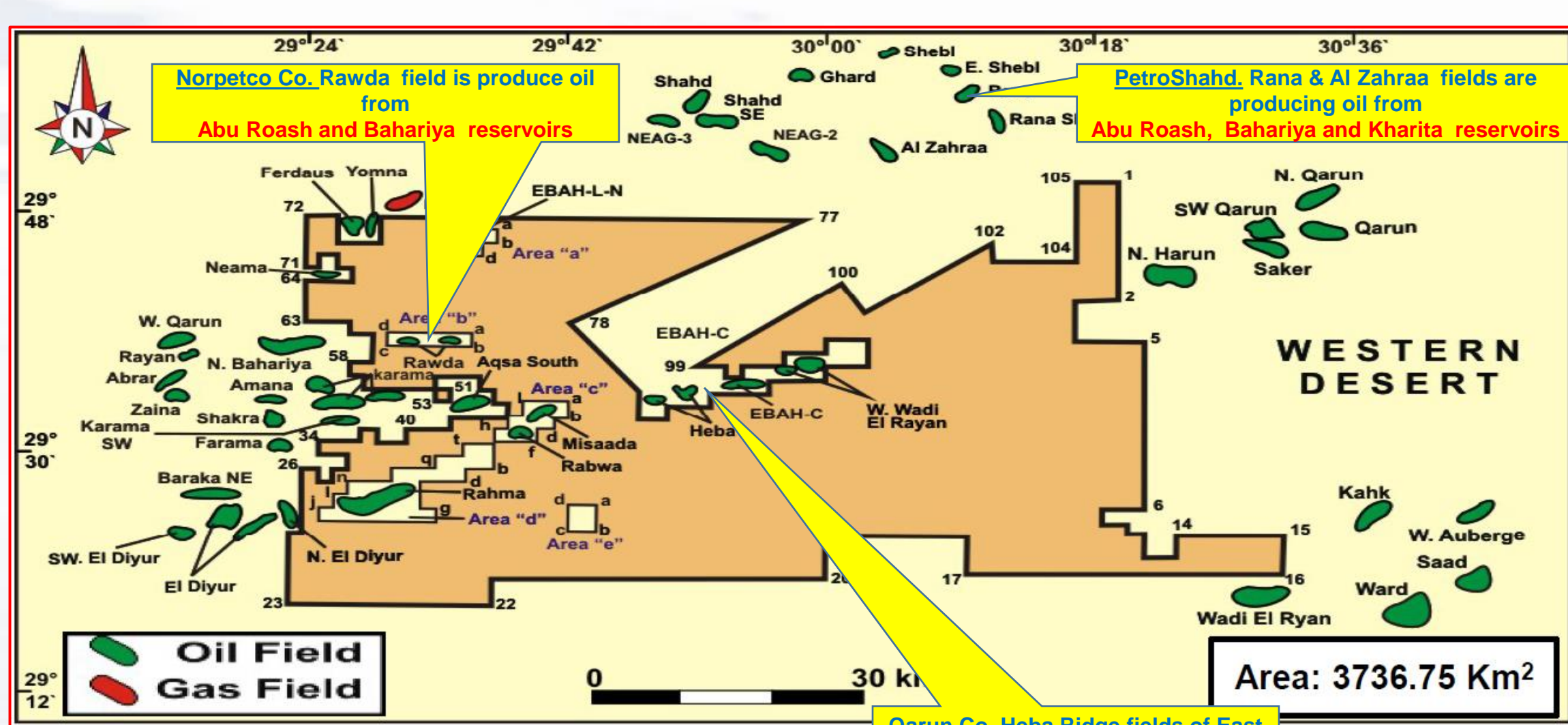
#### ➤ Trap Mechanism:

Mainly structure Trap in addition to Structural/ Stratigraphic trap combination .

AGE		FORMATION	LITHOLOGY	
TERTIARY	EARLY-MIDDLE MIOCENE	MOGHRA	[Lithology: Yellow and brown layers]	
	OLIGOCENE	DABAA	[Lithology: Green and brown layers]	
	EOCENE	APOLLONIA	[Lithology: Blue and brown layers]	
LATE CRETACEOUS	MAASTRICHTIAN CAMPANIAN	KHOMAN	[Lithology: Blue and brown layers]	
			[Lithology: Blue and brown layers]	
	SANTONIAN CONIACIAN	ABU ROASH	"A"	[Lithology: Blue and brown layers]
			"B"	[Lithology: Blue and brown layers]
			"C"	[Lithology: Blue and brown layers]
			"D"	[Lithology: Blue and brown layers]
			"E"	[Lithology: Blue and brown layers]
	TURONIAN			[Lithology: Blue and brown layers]
	CENOMANIAN	"G"	[Lithology: Yellow and brown layers]	
		BAHARIYA	[Lithology: Yellow and brown layers]	
EARLY CRETACEOUS	ALBIAN	KHARITA	[Lithology: Yellow and brown layers]	
	APTIAN	DAHAB ALAMEIN	[Lithology: Yellow and brown layers]	
	NEOCOMIAN BARREMIAN	AEB	[Lithology: Yellow and brown layers]	
JURASSIC	LATE	MASAJID	[Lithology: Blue and brown layers]	
	MIDDLE	ZAHRA	[Lithology: Green and brown layers]	
		U.SAFA L.SAFA	[Lithology: Green and brown layers]	



## Nearby Fields & Productivity



Norpetco Co. Rawda field is produce oil from Abu Roash and Bahariya reservoirs

PetroShahd, Rana & Al Zahraa fields are producing oil from Abu Roash, Bahariya and Kharita reservoirs

Qarun Co. Heba Ridge fields of East Bahariya are producing oil from Abu Roash and Bahariya reservoirs

### Nearby Fields:

The Block is surrounded by some oil fields Operated by Apache/ Qarun company (N. Harun, SW Qarun & Qarun fields) from the East, and ( Karama, Farasha, Neama El Dyiur, Basha & Farama) from the West and from the North we have (Yoman , Neama, E. Bah L).